

# INSTRUCTION GUIDE

*REPLACING BEARINGS & BUSHINGS,  
AND/OR CASTER FORKS*

**UPDATED**



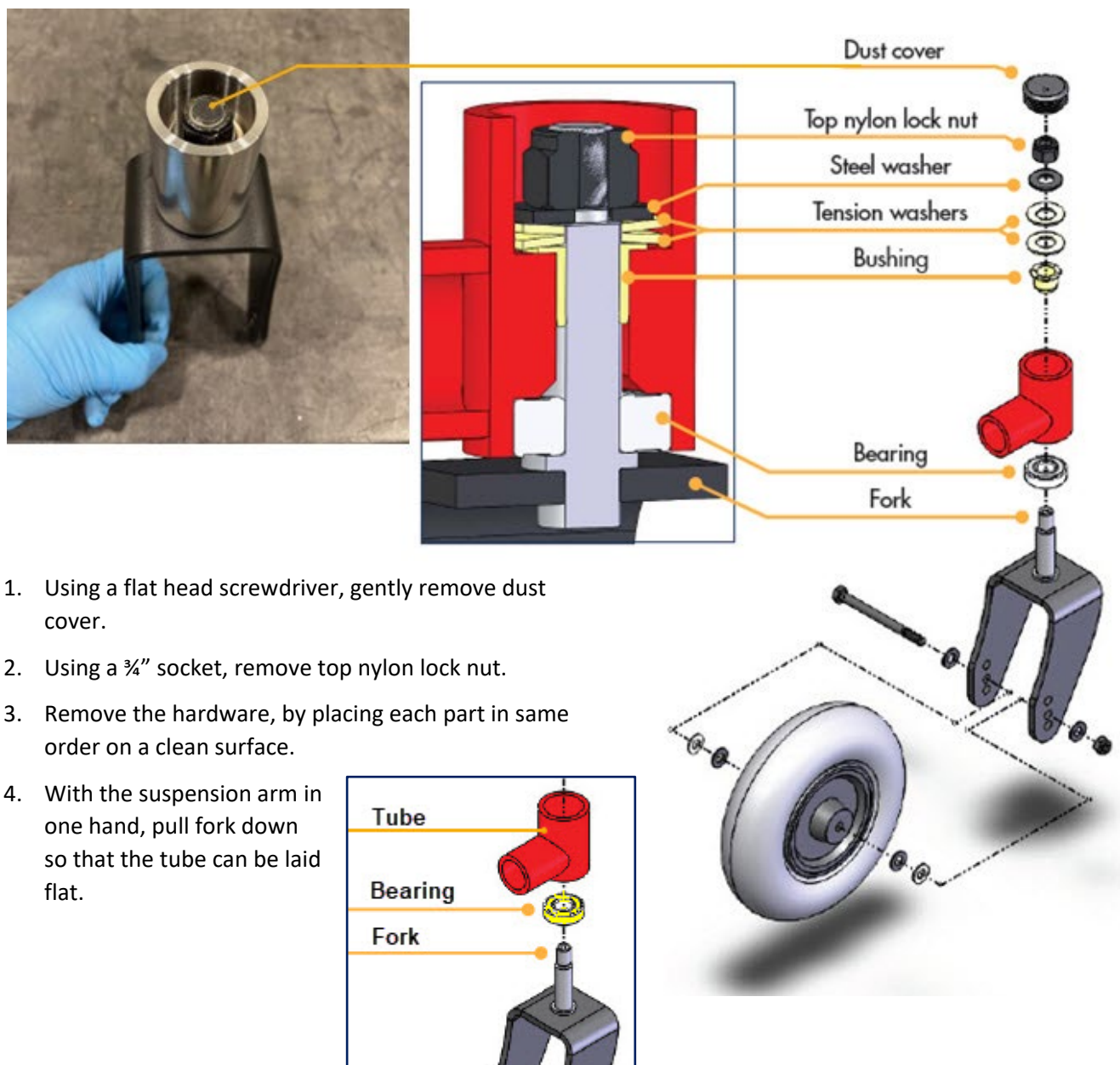
## Replacing Bearing & Bushing, and/or Caster Forks (cont'd)

### INTRODUCTION

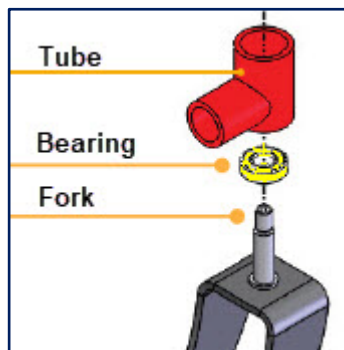
This Guide explains how to replace one or more parts inside the suspension arm tube. In addition, a modification has been made to the tube to help remove the ball bearing.

### DISASSEMBLY

#### Removing the inside of the suspension arm tube



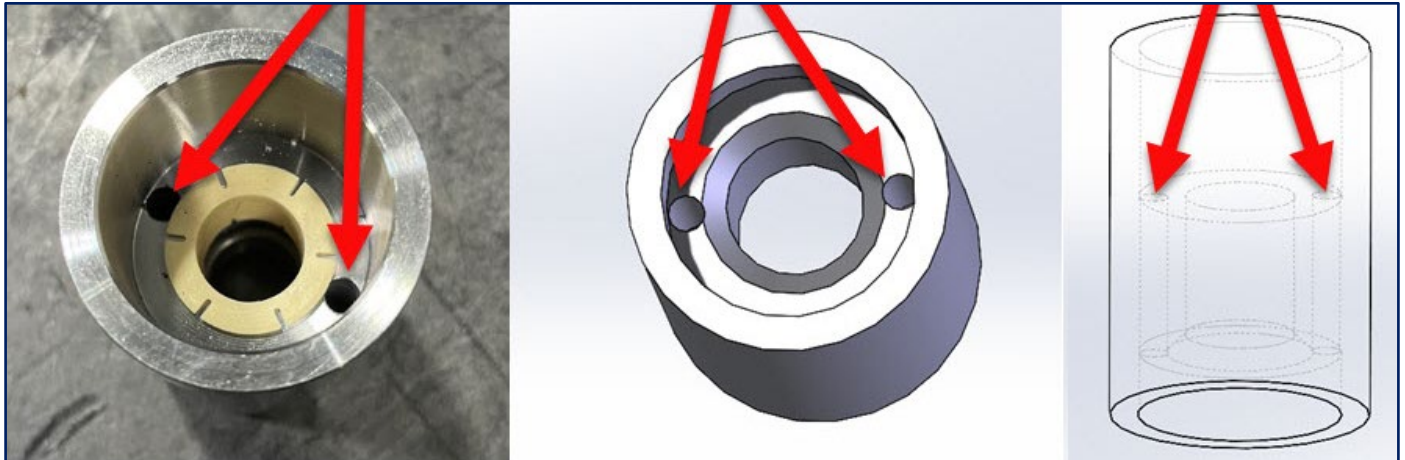
1. Using a flat head screwdriver, gently remove dust cover.
2. Using a  $\frac{3}{4}$ " socket, remove top nylon lock nut.
3. Remove the hardware, by placing each part in same order on a clean surface.
4. With the suspension arm in one hand, pull fork down so that the tube can be laid flat.



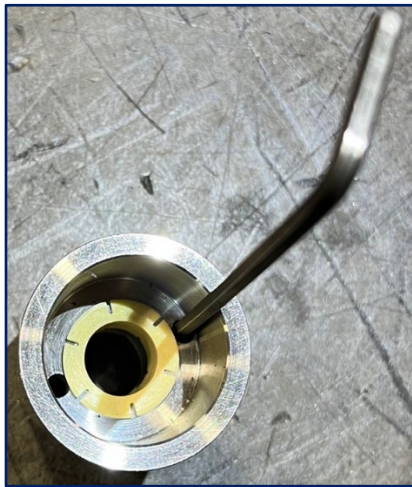
## Replacing Bearing & Bushing, and/or Caster Forks (cont'd)

### Removing ball bearing

The holes have a diameter of 5 mm (0.197") each. The diameter of the tool used must be less than 5 mm, either a 3/16" (0.187") Allen key or punch.



1. Insert tool in one of the holes.
2. Using a mallet or hammer, tap the tool alternately into each hole until the ball bearing is free.



### REASSEMBLY

Before reassembly, all parts should be free of residue and reinstalled in the order shown on the previous page. It is strongly recommended to replace all parts at the same time. NEVER use any kind of lubricant or grease in the fork housing.

**NOTE** - It is very important to ensure that the two tension washers are installed back-to-back as shown on the previous page. This is the only configuration in which they will exert the exact pressure required on the fork stem.

1. Reinstall parts.
2. Tighten nylon lock nut.
3. Replace dust cover.