

INFORMATION BULLETIN

October 2021

NEW BATTERY COVERS EFFECTIVE OCTOBER 1, 2021

INTRODUCTION

As of October 1st, 2021, we have introduced molded covers for the batteries on our wheelchairs. This cover supports cables, the breaker as well as the Anderson connector. Fuses were eliminated on our wheelchairs. We are using new battery harnesses for wheelchairs manufactured after October 1, 2021.

IMPLICATIONS

For wheelchairs delivered with battery cables prior to October 1st, 2021

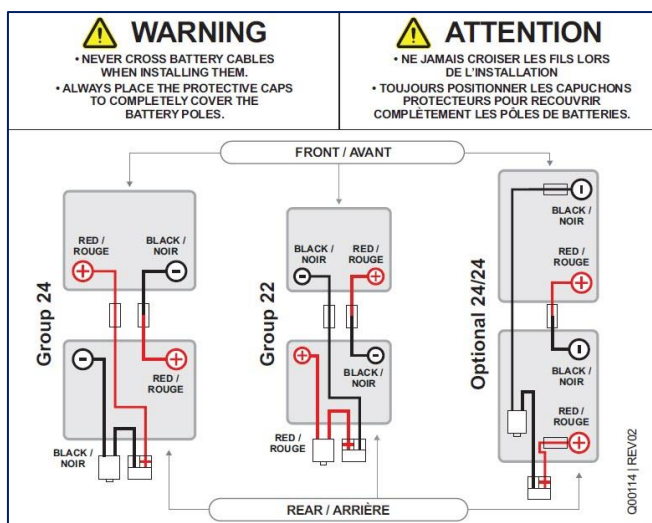
No change if only replacing batteries and cables must be connected using diagram A below. If the harness is damaged, the fuse is burned or there is physical breakage to the cables, new battery covers will be provided, and cable connections must follow diagram B.

For wheelchairs delivered/repaired with battery covers as of October 1st, 2021

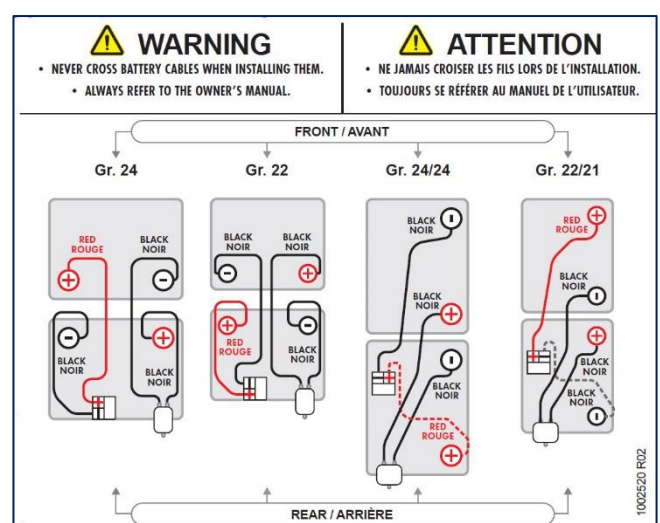
All wheelchairs will be delivered with new battery covers and cable connections must follow diagram B.

DIAGRAMS

A- Previous cable connections



B- New cable connections with covers



BATTERY COVERS AS OF OCTOBER 2021 (cont'd)

WHAT HAS CHANGED

Images below show the difference between batteries.

Cable installation prior to October 1st, 2021

Group 22 or Group 24 batteries



Cover installation as of October 1st, 2021

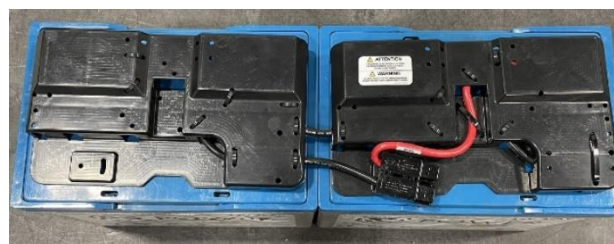


For wheelchairs delivered with battery cables

Group 24/24



For wheelchairs delivered or repaired with battery covers



ADVANTAGES

- Cables are better protected
- Attendant can easily reset the breaker

NOTE – For complete Instruction Guides on Battery Connections (prior to or as of October 1, 2021), please refer to the website <https://amylior.com/instruction-guides/> under the appropriate type of batteries.