

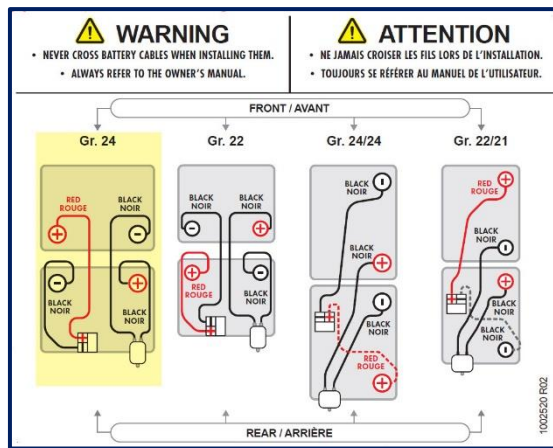
# INSTRUCTION GUIDE

## GROUP 24 BATTERY CONNECTIONS WITH COVERS

### GROUPE 24 CONNECTIONS

#### Diagram (A)

The information label for connecting battery cables is located on the inside of the battery access door as shown in image A below.

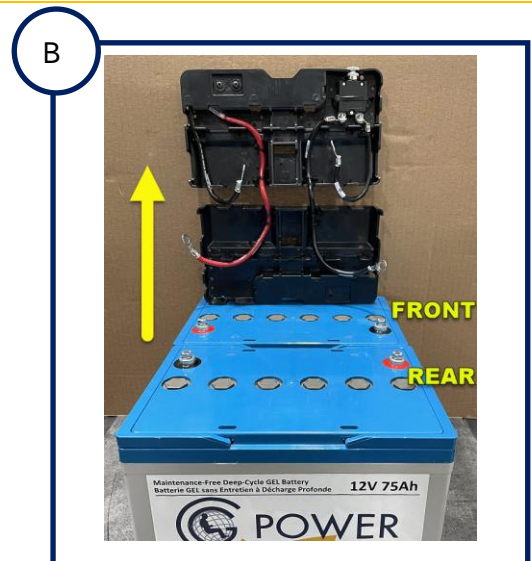


### BATTERIES WITH INTERNAL TERMINALS (with external terminals in next section)

#### Connection sequence of cables

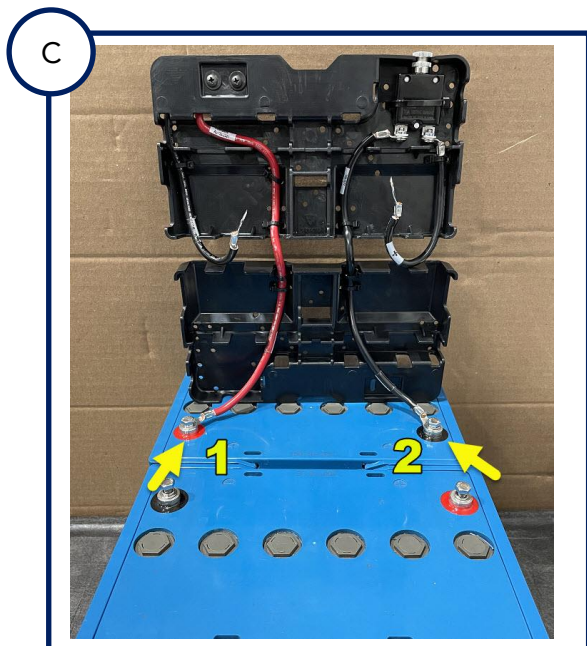
#### STEP 1

Place the batteries in front of you and lift both covers as shown in image B. The front and rear reference is based on the position of the batteries in the wheelchair and follows the Diagram above.

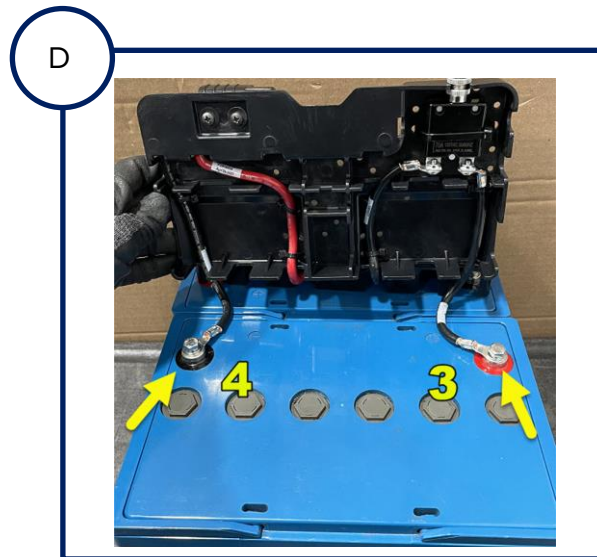


**GR. 24 BATTERY CONNECTION (cont'd)**
**STEP 2 – FRONT CABLES**

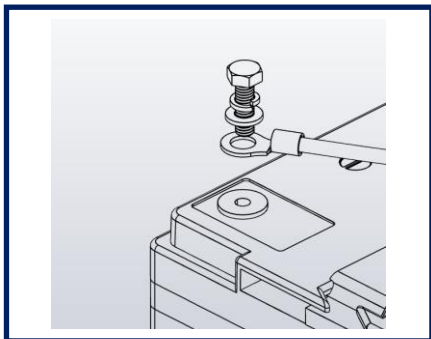
Connect the red cable onto the battery's positive (red) terminal (#1). Next, connect the black cable onto the negative (black) terminal (#2), as shown in image C below.


**STEP 3 – REAR CABLES**

The front cover can be lowered to show the front battery. Connect the black cable with the plus sign (+) onto the battery's positive (red) terminal (#3). Next, connect the black cable with the minus sign (-) onto the negative (black) terminal (#4), as shown in the image D below.


**— NOTES —**

When connecting the cables to the battery, it is important to follow the sequence of the hardware as shown in the illustration below.



Make sure that the connectors on the terminals remain down so as not to interfere when closing covers, as shown in image below.



**GR. 24 BATTERY CONNECTION (cont'd)**
**STEP 4**

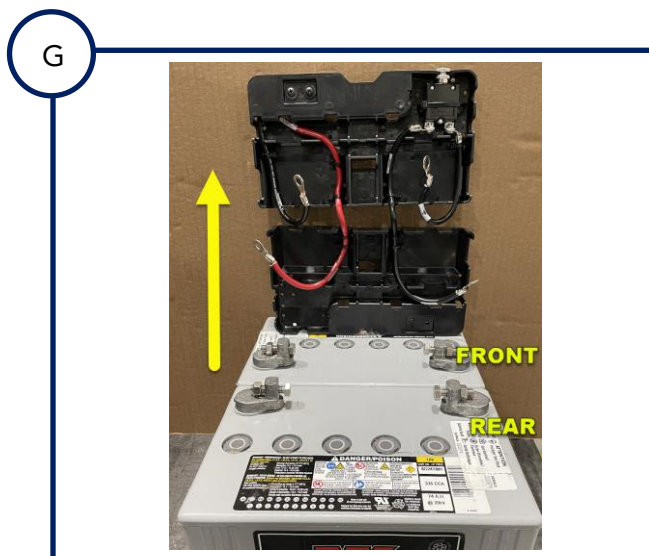
Close covers.


**STEP 5**

The strap must be routed parallel along both batteries over the covers, as shown in image F.

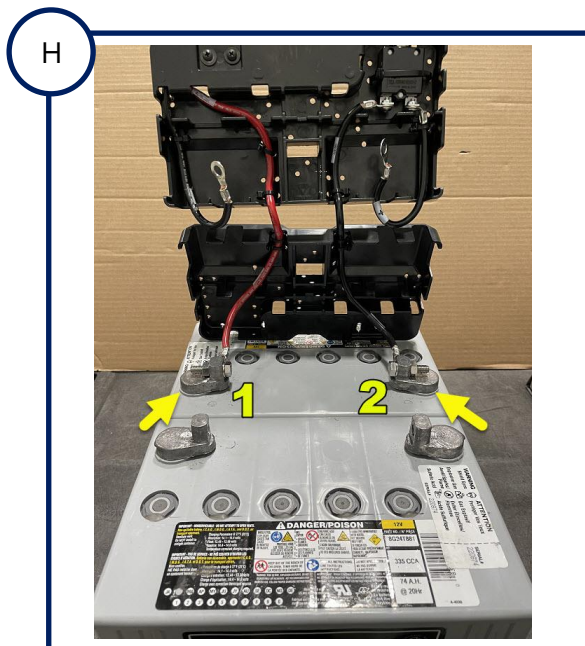

**BATTERIES WITH EXTERNAL TERMINALS**
**Connection sequence of cables**
**STEP 1**

Place the batteries in front of you and lift both covers as shown in image G. The front and rear reference is based on the position of the batteries in the wheelchair and follows the Diagram A on page 1.

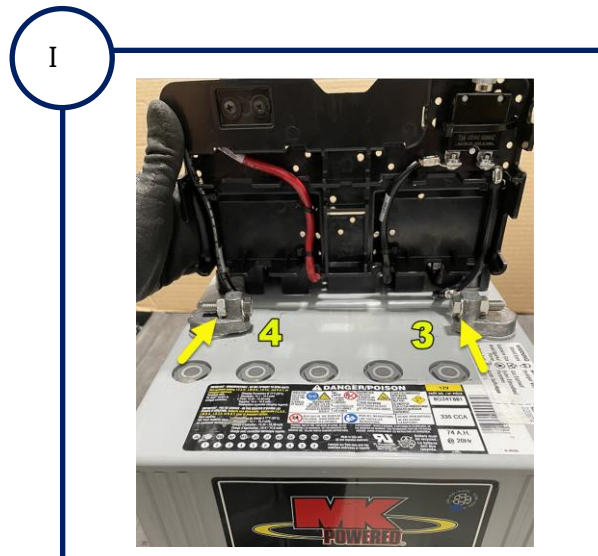


**GR. 24 BATTERY CONNECTION (cont'd)**
**STEP 2 – FRONT CABLES**

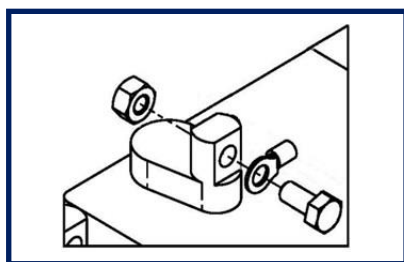
Connect the red cable onto the battery's positive (red) terminal (#1). Next, connect the black cable onto the negative (black) terminal (#2), as shown in image H below.


**STEP 3 – REAR CABLES**

The front cover can be lowered to only show the rear battery. Connect the black cable with the plus sign (+) onto the battery's (red) positive terminal (#3). Next, connect the black cable with the minus sign (-) onto the (black) negative terminal (#4), as shown in the image I below.


**— NOTES —**

When connecting the cables to the battery, it is important to follow the sequence of the hardware as shown in the illustration below.

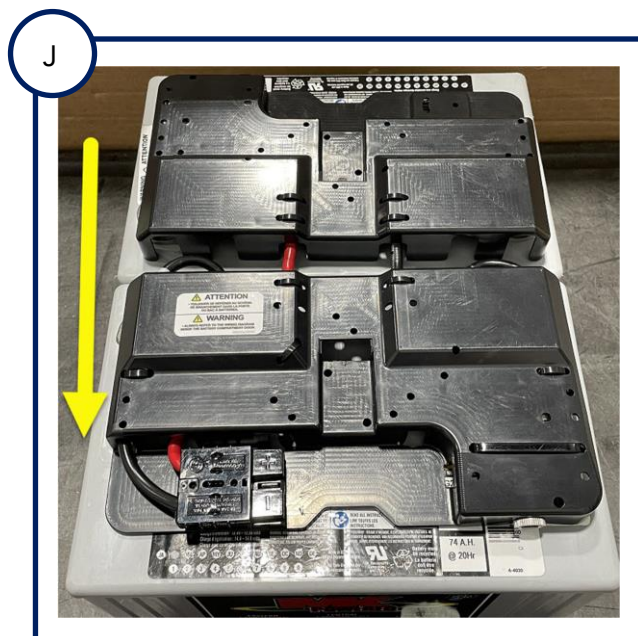


Make sure that the connectors on the terminals remain down so as not to interfere when closing covers, as shown in image below.



**GR. 24 BATTERY CONNECTION (cont'd)**
**STEP 4**

Close covers.


**STEP 5**

The strap must be routed parallel along both batteries over the covers, as shown in image K.

