

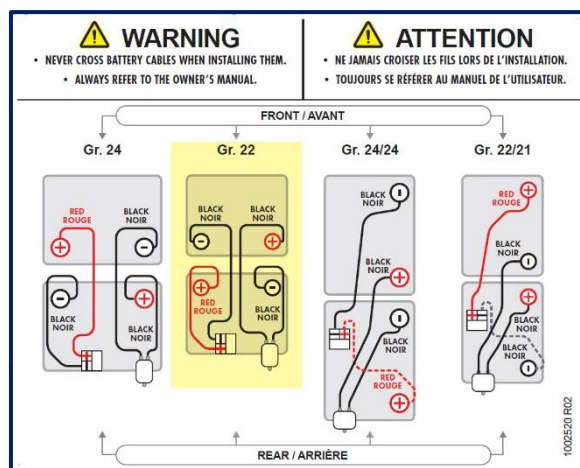
# INSTRUCTION GUIDE

## GROUP 22 BATTERY CONNECTIONS WITH COVERS

### GROUPE 22 CONNECTIONS

#### Diagram (A)

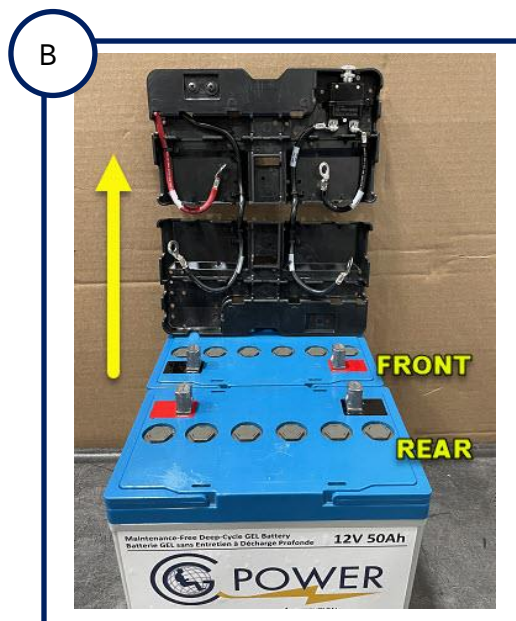
The information label for connecting battery cables is located on the inside of the battery access door as shown in image A below.



#### Connection sequence of cables

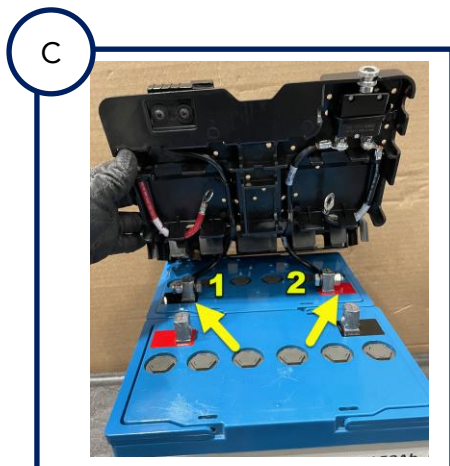
##### STEP 1

Place the batteries in front of you and lift both covers as shown in image B. The front and rear reference is based on the position of the batteries in the wheelchair and follows the Diagram above.

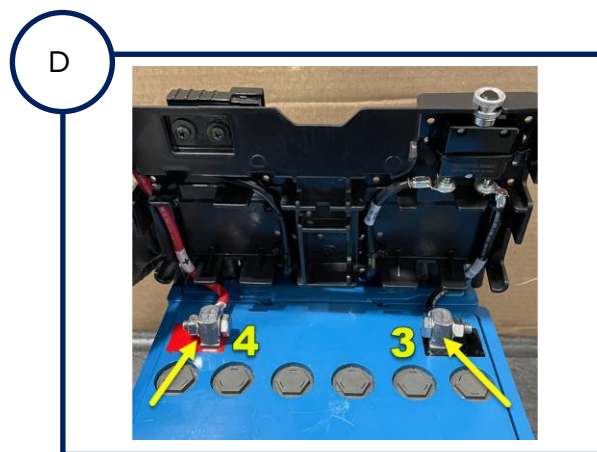


**GR. 22 BATTERY CONNECTION (cont'd)**
**STEP 2 – FRONT CABLES**

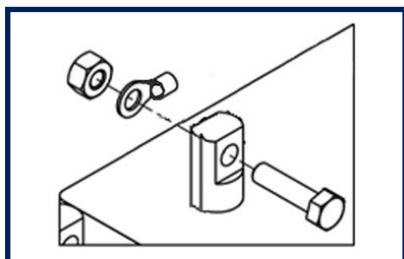
Connect the black cable with the minus sign (-) onto the battery's black negative terminal (#1). Next, connect the black cable with the plus sign (+) onto the red positive terminal (#2), as shown in the image C below.


**STEP 3 – REAR CABLES**

The front cover can be lowered to only expose the rear battery. Connect the black cable onto the negative terminal (#3). Next, connect the red cable onto the positive terminal (#4), as shown in the image D below.


**— NOTES —**

When connecting the cables to the battery, it is important to follow the sequence of the hardware as shown in the illustration below.

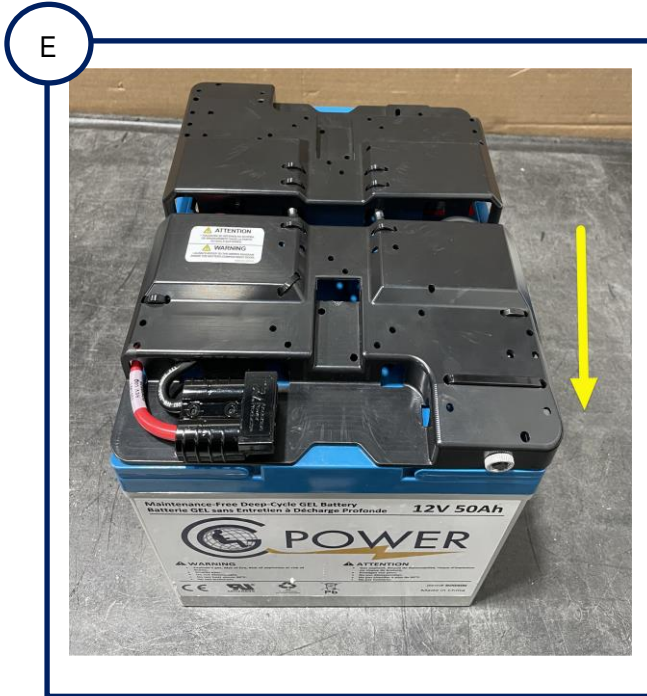


Make sure that the connectors on the terminals remain down so as not to interfere when closing covers, as shown in image below.



**GR. 22 BATTERY CONNECTION (cont'd)**
**STEP 4**

Close covers.


**STEP 5**

The strap must be routed perpendicular to both batteries over the covers, as shown in the image F.

