

INSTRUCTION GUIDE

PROGRAMMING A POWER WHEELCHAIR WITH THE DONGLE WI-FI R-NET D51812



Table of contents

LED Flash Codes	3
1. Downloading programming files and connecting Dongle Wi-Fi with the powerchair's R-net system	3
2. Programming the powerchair	4
3. Transferring files.....	5
4. « Seating » Amylior ISM.....	7
5. Tools	9
6. Exiting the system	11

Programming a power wheelchair with the DONGLE Wi-Fi

LED Flash Codes

This section explains the state of LEDs



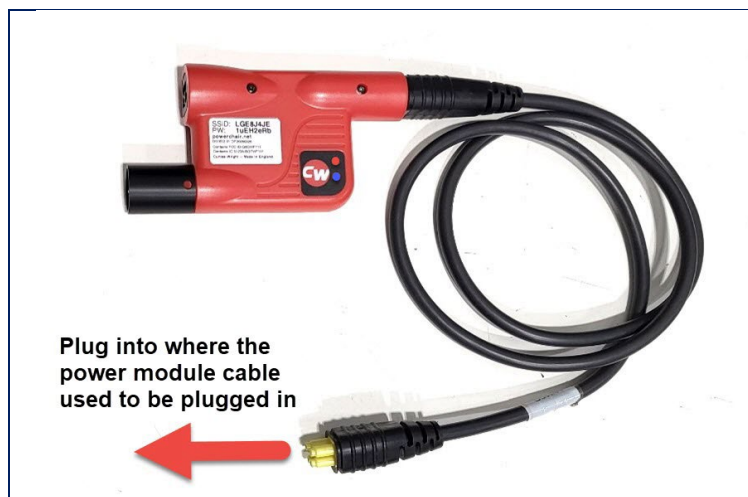
BLUE LED	DESCRIPTION
The blue LED is not illuminated.	The Wi-Fi in the Dongle is not functioning.
The blue LED is flashing	The Wi-Fi in the Dongle is functioning but is not connected to a device.
The blue LED is illuminated	The Wi-Fi in the Dongle is functioning and connected to a device.
RED LED	DESCRIPTION
The red LED is flashing	The Wi-Fi Dongle is powering or has a fault.
The red LED is illuminated.	The Wi-Fi Dongle is functioning correctly.

1. Downloading programming files and connecting Dongle Wi-Fi with the powerchair's R-net system

This section explains how to establish the Wi-Fi connection between the Dongle and the mobile device (smart phone, tablet, laptop, etc.)

Note: The Wi-Fi connection is local between the Dongle and the device being used for programming – no connection to another Wi-Fi network is possible.

- 1.1. Download the programming file(s) to the mobile device before connecting to the Dongle. These file(s) should already have been received beforehand.
- 1.2. Unplug the cable from the power module and plug it into the Dongle.
- 1.3. Plug the bus cable that comes with the Dongle into where the power module cable was plugged in.



- 1.4. The red LED starts flashing.
- 1.5. Start the powerchair's system.
- 1.6. The Dongle is ready to pair when the blue LED starts flashing.

Programming a power wheelchair with the DONGLE Wi-Fi

- 1.7. On the mobile device, open Settings/Connections/Wi-Fi (some terms may be different on some devices) and select the network indicated by SSID on the Dongle's label.
- 1.8. Enter password indicated by PW on the Dongle's label.
- 1.9. The Wi-Fi connection with the mobile device is confirmed when the blue LED is illuminated.
- 1.10. Open the browser on the mobile device and enter the following address: <http://powerchair.net>
- 1.11. Read Warning and click "ACCEPT TERMS"

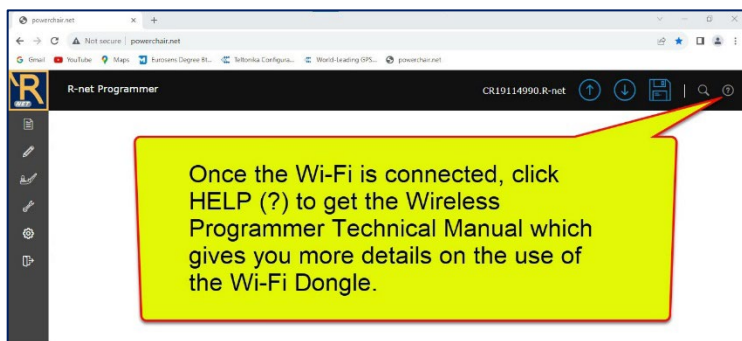


2. Programming the powerchair

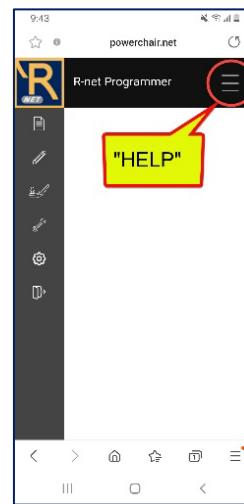
This section explains how to program the powerchair from a programming file saved on the mobile device.

- 2.1. On the Menu, click File – Management and select "Upload File to Dongle".
- 2.2. Use "My files" to find the file(s) that were saved on the mobile device. Select a file and click "Done". The file will be stored on the Dongle. Files must be uploaded one at a time.
- 2.3. To program the powerchair with the uploaded file(s), select one file at a time in the list « File – Open » and click "Open".
- 2.4. The main menu displays as empty. At anytime, you can access the Technical Manual with the Help button.

The look on a laptop



The look on a smart phone*

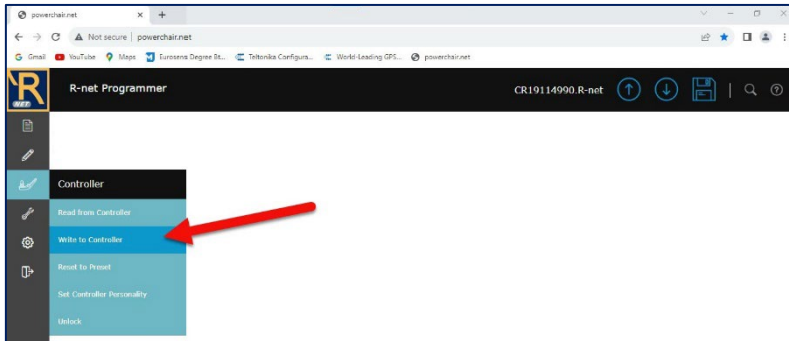


*The view may differ depending on the smart phone brand.

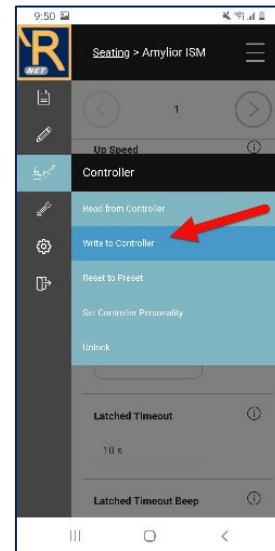
Programming a power wheelchair with the DONGLE Wi-Fi

2.5. In the "Controller" menu, click "Write to Controller". This will write the contents of the file to the controller.

The look on a laptop



The look on a smart phone



2.6. Contents will be transferred to the controller "Writing to Controller".

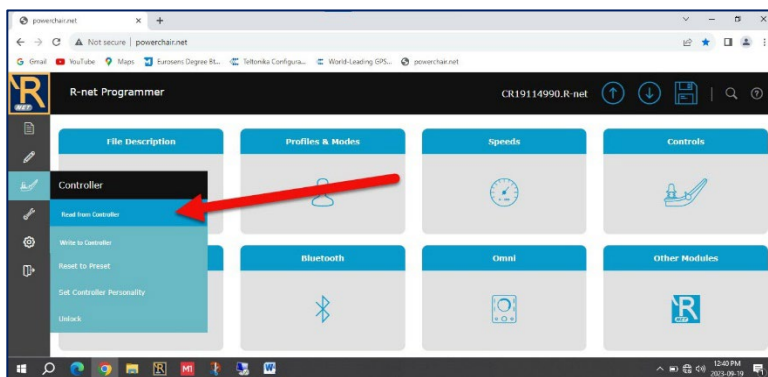


3. Transferring files

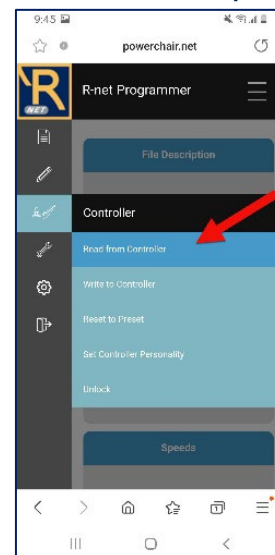
This section explains how to transfer saved files from the Dongle to the mobile device.

3.1. Read from controller by clicking « Controller/Read from Controller » to transfer the power chair's settings to the Dongle.

The look on a laptop



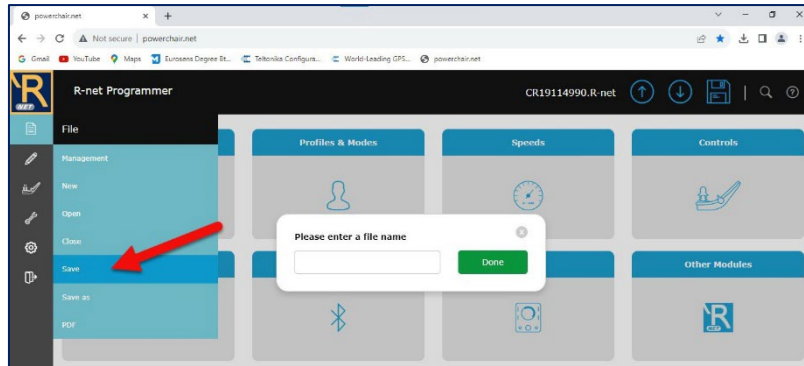
The look on a smart phone



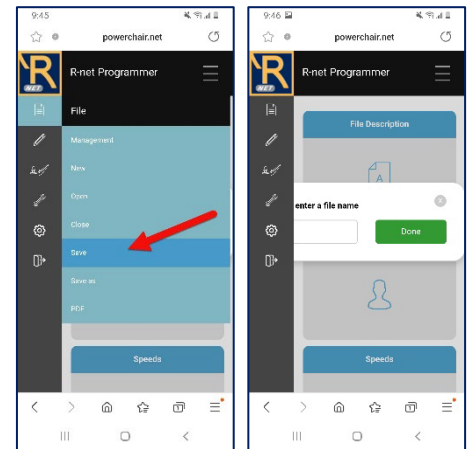
Programming a power wheelchair with the DONGLE Wi-Fi

- 3.2. Save the program onto the Dongle using the « File » icon on the menu.
- 3.3. Click « Save » or « Save as » and give the file a name.

The look on a laptop

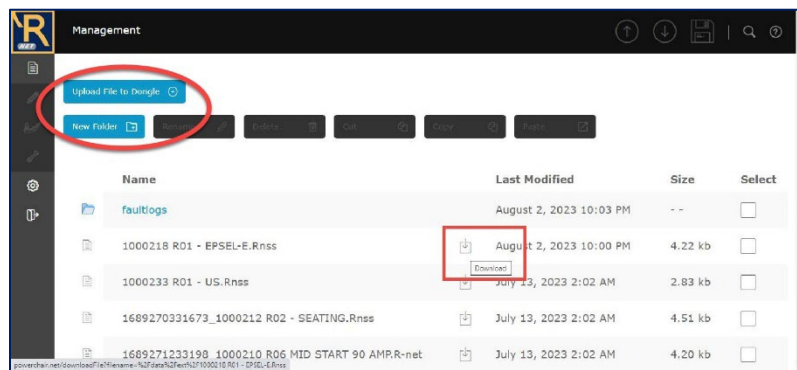


The look on a smart phone

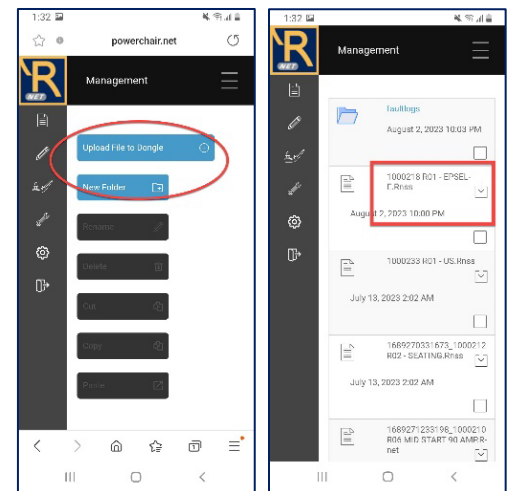



- 3.4. To save the program on the mobile device in the same "File/Management" directory, click on the down arrow (Download) next to the name of the programming file to be saved.

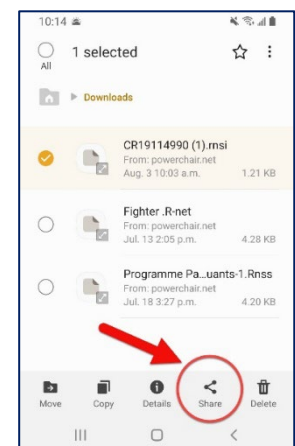
The look on a laptop



The look on a smart phone



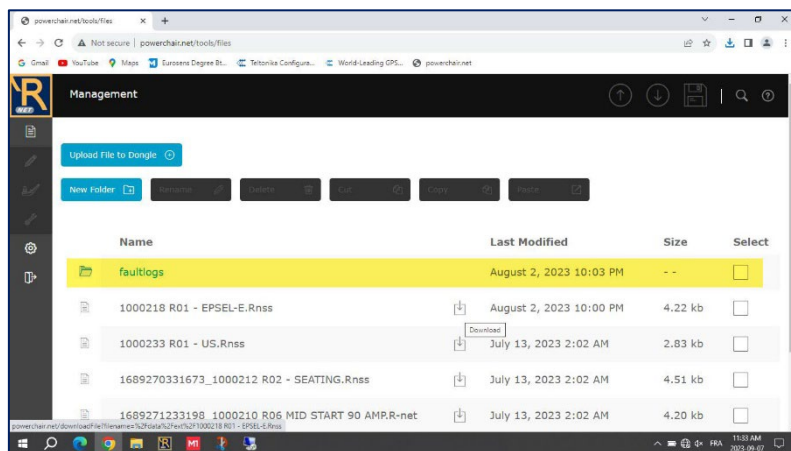
- 3.5. The file will be saved in the "Downloads" folder on the mobile device.
- 3.6. From here, the file can be sent by e-mail. Note that at this point, there is no access to an external Internet network to transfer the information by e-mail. You need to disconnect from the Dongle's Wi-Fi.
- 3.7. Click on the door icon  in the sub-menu to disconnect from the Dongle. Next, activate the external Internet connection to send the programming file, if required.
- 3.8. On the mobile device, go to the directory containing the file to be sent.
- 3.9. Select the programming file and click "SHARE".
- 3.10. Select "Share by e-mail".
- 3.11. Enter email address.



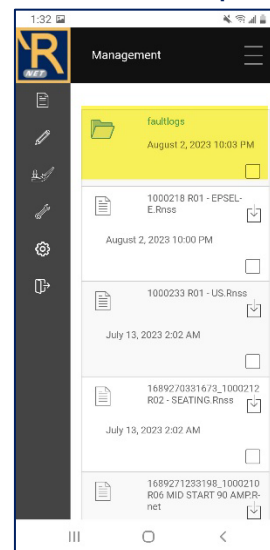
Programming a power wheelchair with the DONGLE Wi-Fi

Note: Error codes are listed in the “Faultlogs” folder.

The look on a laptop



The look on a smart phone

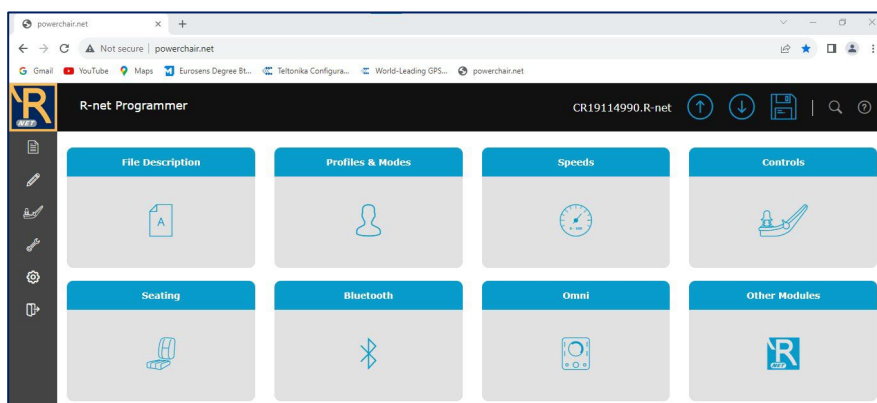


4. « Seating » Amylior ISM

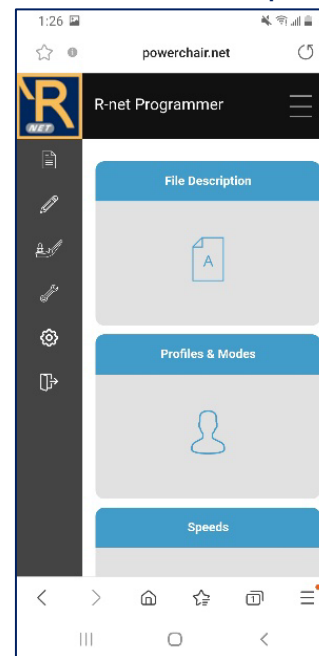
This section explains settings in Amylior ISM.

- Click on the R-net symbol (top left corner of the screen) to bring up the main screen which displays the parameters. (On a cell phone, you have to scroll down to access all parameters).

The look on a laptop



The look on a smart phone



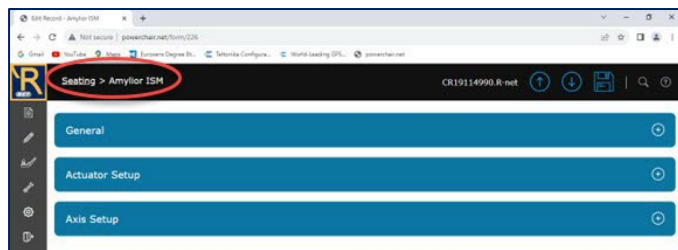
Programming a power wheelchair with the DONGLE Wi-Fi

4.2. Click "Seating" then scroll down to "Amylior ISM".

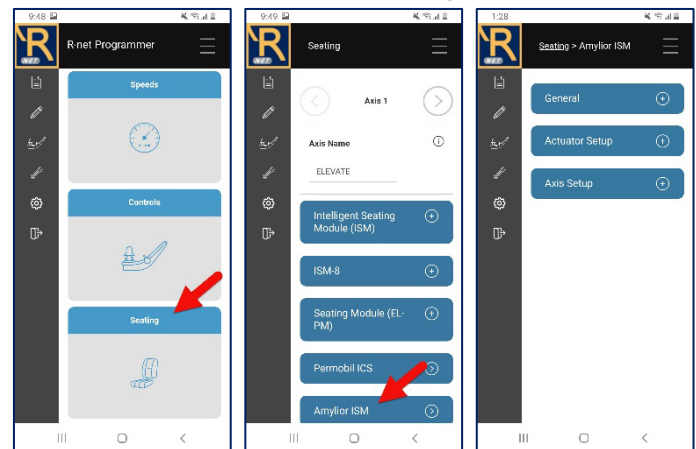
This will display three sections:

- **General**: Shows actuator settings and values including maximum and minimum values (Max limit #X (% or " "), Min limit #X (% or " ")).
- **Actuator Setup**: Includes actuator settings for *Acceleration*, *Deceleration*, *Speed Up/Down*.
- **Axis Setup**: Includes *Acceleration & Deceleration* values on axis as well as the actuator "Latched" mode.

The look on a laptop

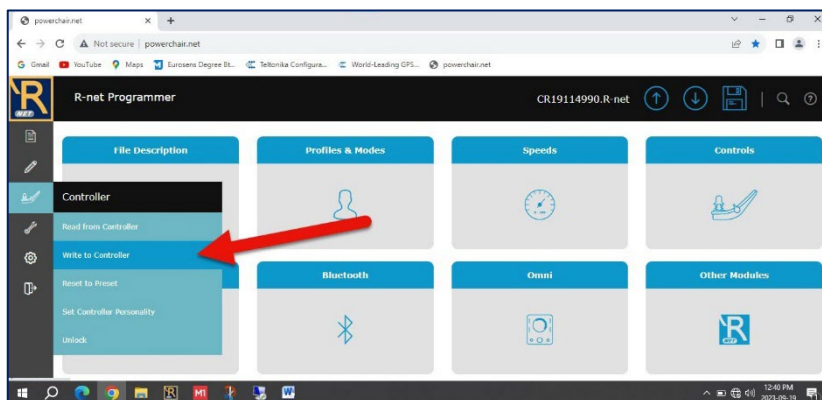


The look on a smart phone

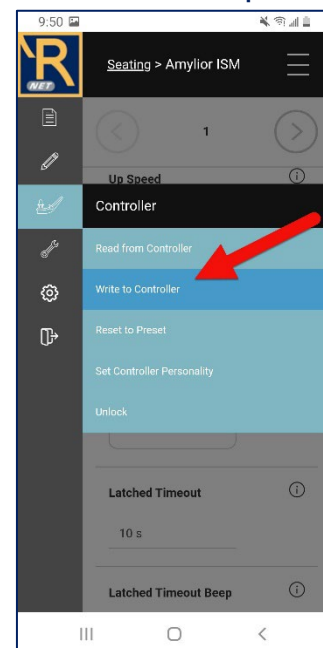


4.3. To program the power chair with the modified settings, click the joystick icon in the menu and select « Write to controller ».

The look on a laptop



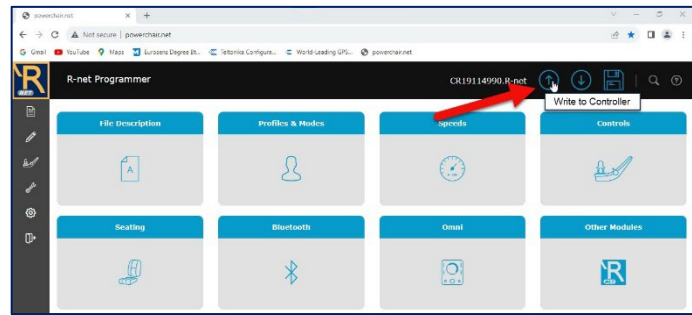
The look on a smart phone



Programming a power wheelchair with the DONGLE Wi-Fi

- 4.4. On a computer/laptop, this option can also be accessed via the up arrow in the top right-hand corner of the main menu.

Note: To return to the main menu, click the R-net icon.



5. Tools

This section explains how to read the system's log of error codes and save it to the mobile device.

- 5.1. The Tools menu contains the following options:

- Diagnostics
- System Logs
- System Timers
- Distance
- Clock
- System Tests

- 5.2. Access System Logs

5.2.1. To access the e-bx controller's error log, scroll down and click "+" beside the "Amy Seating e-bx" option. Error codes will be displayed from most recent to oldest.

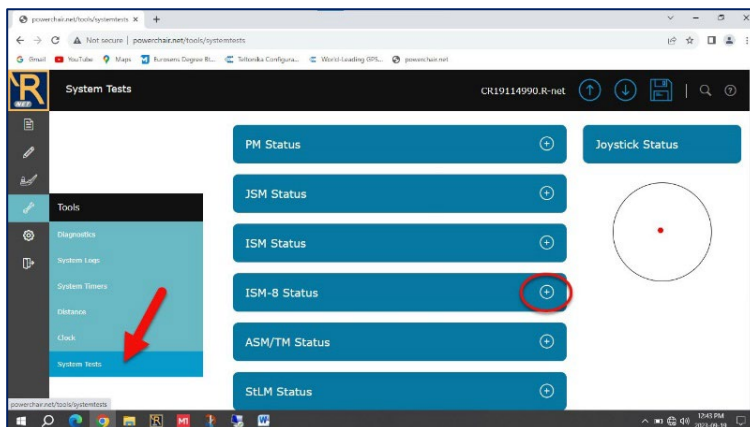
5.2.2. Click "Save" to back up the error log.

- 5.3. System Tests – e-bx inhibits

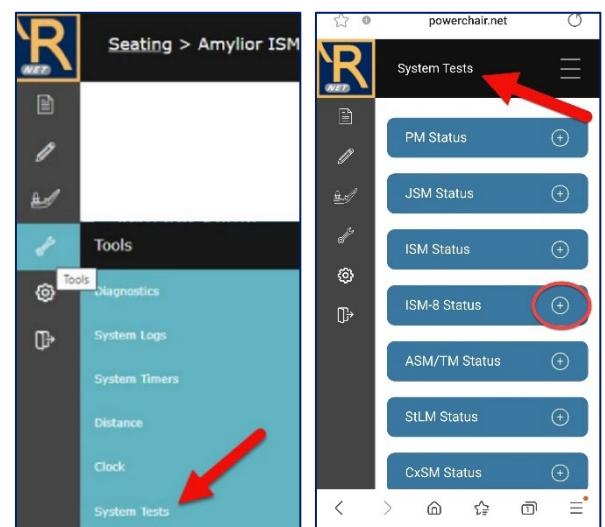
This section explains how to read the status of each e-bx's inhibit.

5.3.1. In Tools, click System Tests and then click on the "+" in "ISM-8 Status".

The look on a laptop



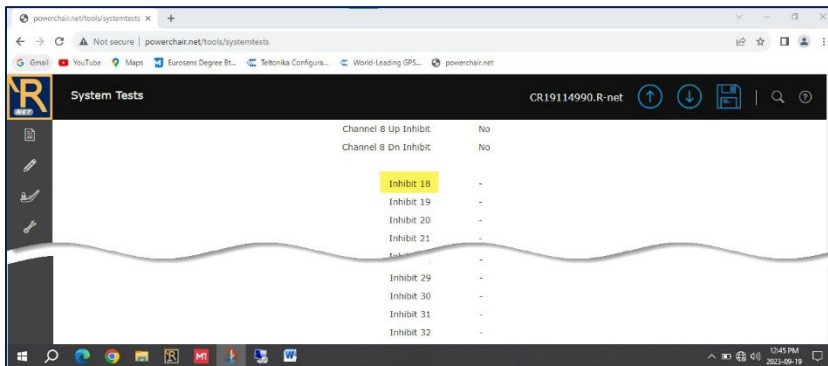
The look on a smart phone



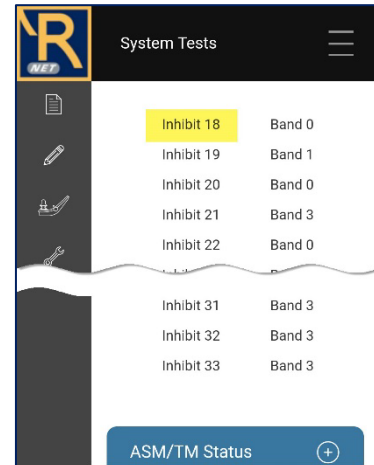
Programming a power wheelchair with the DONGLE Wi-Fi

5.3.2. Scroll down to get the list e-bx's inhibits.
(starting at Inhibit 18)

The look on a laptop

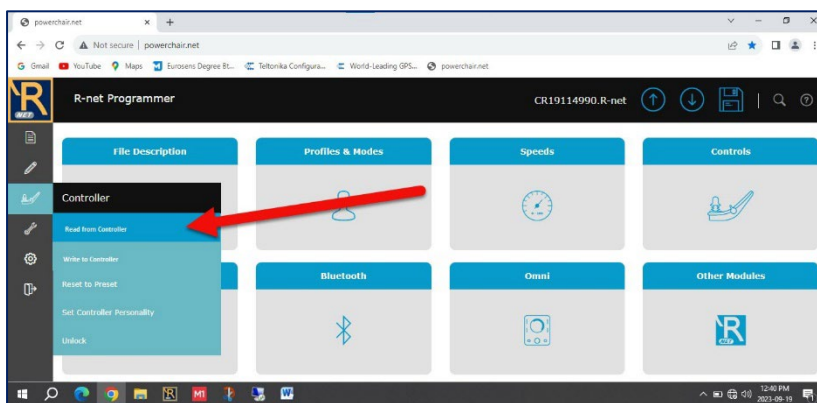


The look on a smart phone

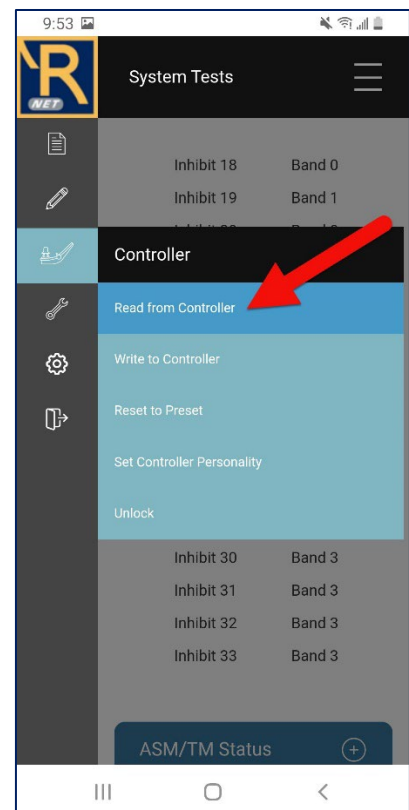


5.3.3. Note that to have inhibit statuses in real-time, read the controller's data from the joystick icon . Click "Read from Controller" each time the actuator changes position.

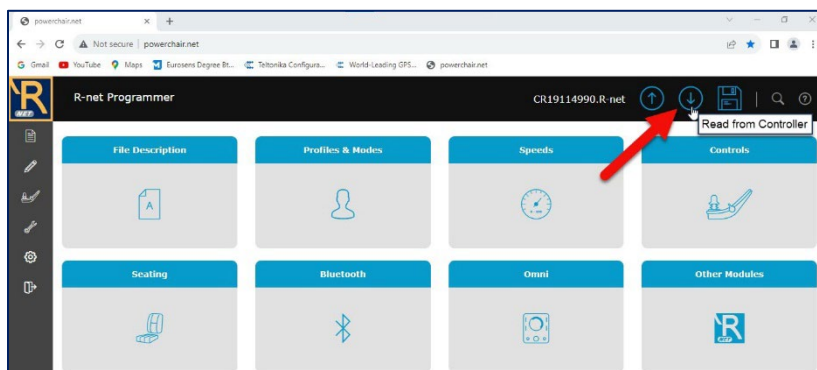
The look on a laptop



The look on a smart phone




On a computer/laptop, this option can also be accessed via the down arrow in the top right-hand corner of the main menu.

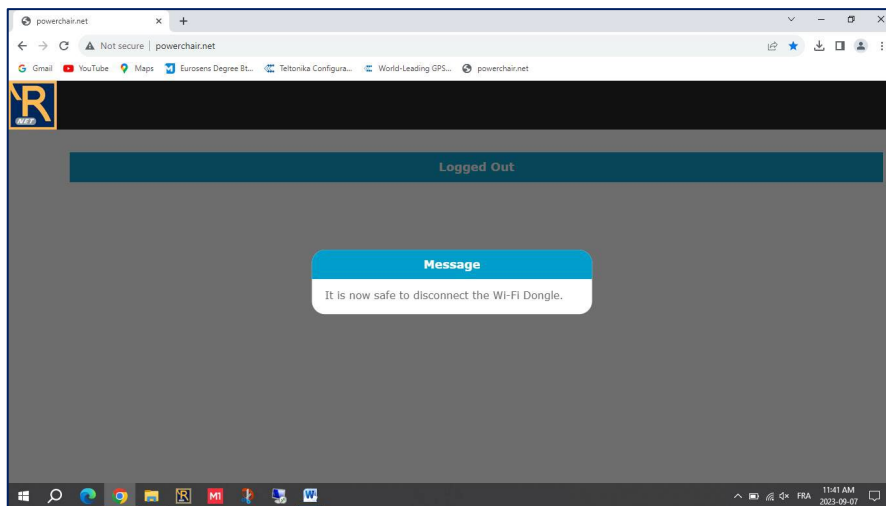


6. Exiting the system

This section explains how to log out of the Wi-Fi Dongle.

6.1 In the menu, click the door icon  and wait for the message displaying that it is safe to disconnect.

The look on a laptop



The look on a smart phone

