



ENJC

Installation Guide

Introduction

This is the Enjo drive unit mounting bracket installation guide. This electric propulsion assistance system is designed to make pushing a wheelchair easier, providing invaluable discreet and effective assistance to caretakers when handling a wheelchair. Its light weight 8.8 lb (4 kg) and innovative features make it a practical accessory to help you get around every day.

Purpose of the guide:

This detailed guide is designed to give you step-by-step instructions for installing the Enjo mounting bracket. Each instruction step is carefully designed to ensure safe, accurate and optimum installation of the power add-on on the wheelchair. Our priority is to provide you with all the information you need to use this equipment safely and efficiently.

Follow these instructions carefully to ensure proper installation, enabling smooth and safe use of the Enjo drive unit and providing optimal user experience.

List of equipment required:

The purpose of this installation guide is both to install the bracket for the Enjo and to check the compatibility of the wheelchair with the power add-on. The Enjo, in its standard configuration, is supplied in a case containing the following items:

- Enjo drive block: The power add-on itself.
- Side brackets: For attaching the Enjo to the wheelchair.
- Support bar: For connecting the Enjo to the wheelchair.
- Charger: To power the Enjo battery.
- Control unit: Used to control the functionality of the Enjo.

In addition to the standard contents of the Enjo, you will need the following tools and components for installation:

- Hex spanners: For securing side brackets and other components.
- Tape measure: Useful for taking accurate measurements.
- Medium threadlocker : To secure fasteners and prevent them from loosening (put on each screw).
- Star (Torx) spanner kit: For handling and adjusting certain Enjo components.

Make sure you have this equipment available for proper installation of the Enjo support on your wheelchair. These tools are essential for a safe and effective installation.

Preparation before installing:

Before beginning the process of installing the Enjo on your wheelchair, a few general recommendations are essential to ensure a smooth and proper installation:

- 1. Check integrity of parts:** Before handling, ensure that all parts supplied with the Enjo are present and in good condition and that there is no visible damage or manufacturing defects.
- 2. Wheelchair compatibility:** Make sure the Enjo is compatible with the wheelchair you wish to install it on.
- 3. Adequate workspace:** Prepare a clean, uncluttered workspace for installation. Make sure you have enough space to manoeuvre and work comfortably around the wheelchair.

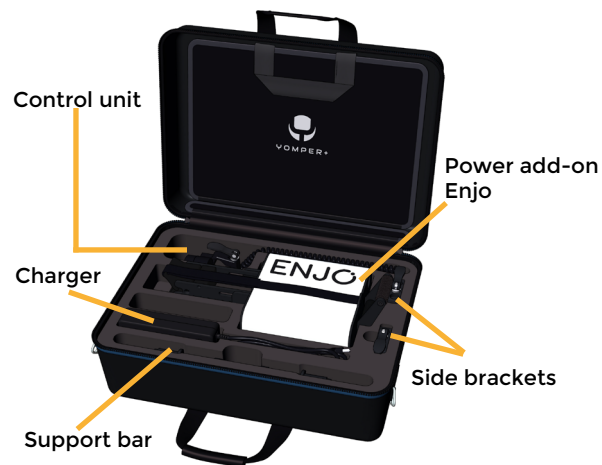
Following these recommendations will ensure that you start the installation process with complete equipment, a clear understanding of compatibility and an environment conducive to the safe and accurate installation of the Enjo on your wheelchair.

Safety instructions for installing the support on the wheelchair:

Installing the Enjo support on your wheelchair is a delicate operation requiring specific expertise. To ensure safe and optimal installation, it is important to entrust this task to a qualified dealer, preferably in a workshop equipped with the appropriate tools.

It is essential to strictly follow each step described in this guide in the same order. This not only ensures proper installation, but also minimises the risk of injury or potential material damage.

By entrusting this operation to an experienced dealer and giving the technician the time needed to carry out the installation in optimum conditions, you can guarantee safe and reliable use of the Enjo on your wheelchair, while minimising the risks associated with incorrect installation.



Step 1: Positioning the side brackets to secure the support bar

1 Measure the height from floor to tube (X value)

Use a tape measure to determine the distance between the floor and the wheelchair tube. Take note of this measurement.

Check the measurement ranges:

- If the measured height (X) is greater than or equal to 7" (180 mm) and less than or equal to 12.2" (310 mm), this corresponds to a compatible measurement range for the installation.
- If the height is between 6" and 7" (150 mm and 180 mm), an extension L will be required to reach the compatible measurement range.
- If the height is less than 6" (150 mm), this measurement would not be compatible with the installation.

2 Measure the depth of the tube (Y value)

Measure the distance from the axle of the wheelchair to the area where the support bar will be placed. Note the minimum and maximum possible distances for fitting a 0.8" (20 mm) clamp.

3 Consult the compatibility table (on the next page)

Use the X and Y values and refer to the compatibility table provided. This table cross-references these measurements to determine the ideal position for the side brackets.

4 Determining the ideal position

Look for a green box corresponding to the combination of X and Y values measured. The green boxes indicate optimal positions for installing the Enjo, avoiding any excessive offset to the rear of the wheelchair. If only the orange boxes are accessible, this is still acceptable, although less optimal.

Make sure that measurements are accurate and that the compatibility table is consulted carefully to ensure proper positioning of the side brackets onto the support bar.

Step 2: Specific mounting kit to suit your wheelchair

The appropriate mounting kit, which includes the side brackets and support bar, varies based on the type of wheelchair. The Enjo Order Form specifies the compatible mounting kit required for your selected wheelchair model. Using this information, please refer to the corresponding installation guide available on our website under Support > Instruction Guides > Enjo.

Step 3: Adjusting the safety strap

1



Before attaching the strap, make sure your wheelchair brakes are applied. Verify that the Enjo is correctly attached to your wheelchair according to the instructions enclosed.

Fastening the Strap

1. Position the strap on the wheelchair handle or on a suitable push bar.
2. Gradually tighten the strap so that it is firmly attached and does not slip.

2



Adjusting the tension

1. Once the strap has been attached, position the tightening buckle horizontally.
2. Gradually tighten the buckle until the strap is taut enough to prevent the Enjo from passing under the wheelchair.
3. Make sure the Enjo wheel remains in continuous contact with the ground when the strap is tightened. This will ensure safe and stable use of the drive unit on your wheelchair.
4. Rotate the buckle 90° downwards to allow some slack in the strap.

3



Final check

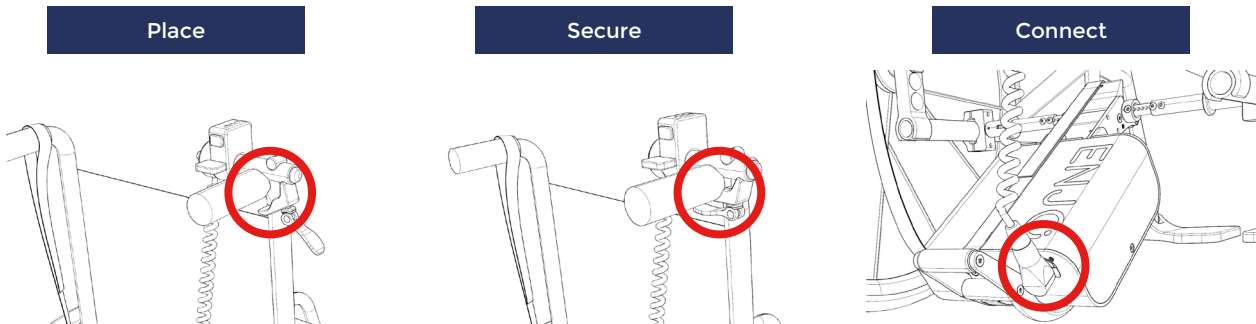
1. Test the manoeuvrability of your wheelchair to make sure that the Enjo works well without hindrance.
2. Make sure that the strap is properly adjusted, neither too loose nor too tight.

Tip: Check the strap tension regularly to ensure the continued safety of your Enjo installed on the wheelchair. Periodic adjustment may be required to maintain the proper tension and ensure safe and optimal operation.

Step 4: Fitting the control unit

- 1 Make sure the control unit is switched off (LEDs off) before starting the installation process.
- 2 The control unit is attached to the wheelchair handle using a saddle clamp system similar to that used on bicycles.
- 3 Tighten the quick-release clamp gradually until it is firmly in position on the wheelchair handle tube. Make sure that the unit is securely fastened and isn't loose once secured.
- 4 Connect the control unit to the Enjo socket provided.
- 5 Once the control unit is correctly connected to the Enjo, it is ready to be used to control and regulate the Enjo's functions.

For optimal operation of your Enjo drive unit, make sure the above steps are followed carefully so that the control unit works properly and safely.



Distributed by:



3190 F.-X.-Tessier
Vaudreuil-Dorion QC
J7V 5V5, CANADA
www.amylior.com

Manufactured by:

acekare

SARL Acekare
7 Rue de Mireport
33310 Lormont
FRANCE
www.acekare.com